**Model number****WCS-MB2-C**

Mounting bracket for C profile, straight section

Features

- Mounting bracket for code rail, straight
- Installation in C profile rail 30 mm x 32 mm
- Powder coated

Matching system components**WCS3-CS70-M1-1000FT**

Code rail, stainless steel

WCS2-CS55-L1

Laminate type, 55 mm

WCS2-CS55-M1

Stainless steel type, 55 mm

WCS2-CS70-L1

Laminate type, 70 mm

WCS2-CS70-M1

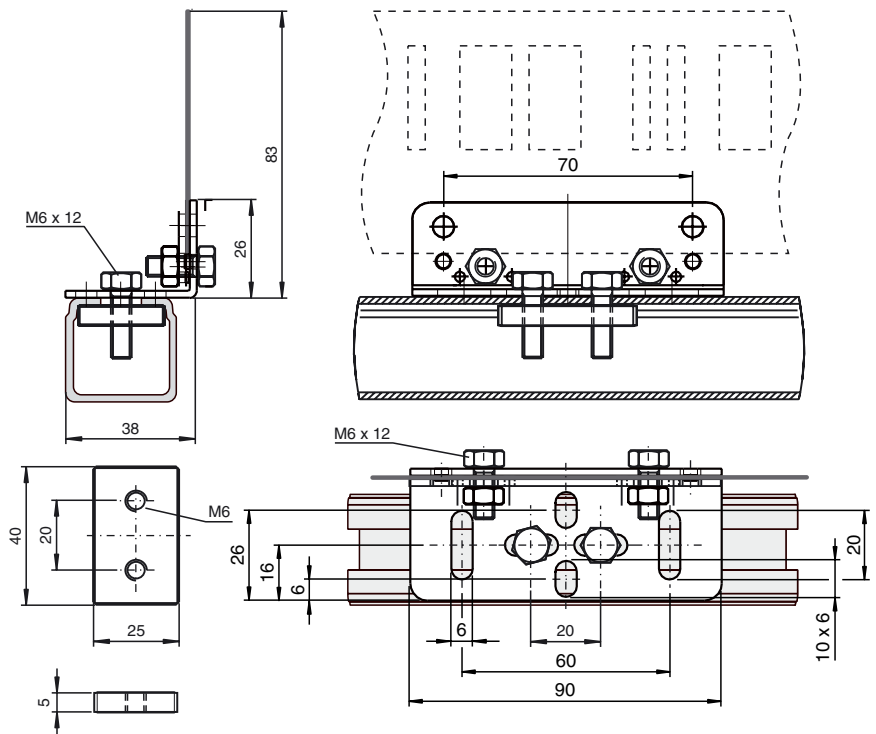
Stainless steel type, 70 mm

WCS3-CS70-L*

Code rail, polyester laminate

WCS3-CS70-M1

Code rail, stainless steel

Dimensions**Technical data****Ambient conditions**

Ambient temperature -40 ... 100 °C (-40 ... 212 °F)

Mechanical specifications

Material thickness 2 mm

Material Metal sheet (steel), zinc-plated, powder coated

Mass 125 g (without fastening screws)