



# PAGU-FLEX

## FLEXIBLE ISOLATING COUPLING

- High precision for positioning applications
- Without wear or fatigue
- Vibration absorption
- Good torsional elasticity



Adjunctes to a great variety of uses, the PAGU-FLEX couplings have been designed flexibly in accordance with the existing agreements for the shaft, as well as with the different requirements of the specific application cases.

In the standard versions, each one of the galvanised heads (C15K material) has a cylindrical hole (H7 tolerance) and is fixed to the shaft through a stay bolt with a hexagonal head DIN 916. The internal heads are very useful in situations with little space or reduced access.

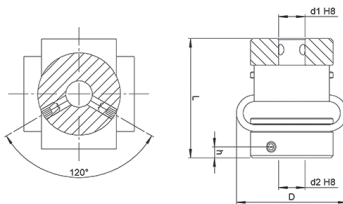
### TECHNICAL SPECIFICATIONS

|               | Torque | Clamping torque | Max. Speed | Admissible max. misalignment |       |        | Torsion spring stiffness | Radial spring stiffness | Weight | Inertia |
|---------------|--------|-----------------|------------|------------------------------|-------|--------|--------------------------|-------------------------|--------|---------|
|               | Nm     | Ncm             |            | Angular                      | Axial | Radial |                          |                         |        |         |
|               |        |                 |            | degree                       | mm    | mm     |                          |                         |        |         |
| <b>GFP 10</b> | 0,5    | 100             | 3.000      | ±10                          | ±2    | ±2     | 13                       | 13                      | 33     | 41      |
| <b>GFP 20</b> | 2      | 100             | 3.000      | ±12                          | ±4    | ±3     | 28                       | 7                       | 85     | 106     |
| <b>GFP 30</b> | 5      | 300             | 3.000      | ±15                          | ±5    | ±5     | 43                       | 9                       | 140    | 220     |

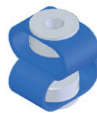


**GFP 10**

Ø d1/d2  
06/06  
08/08

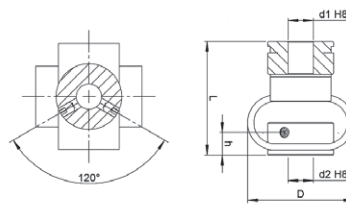


Ordering code example: GFP 10 06/06

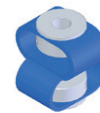


**GFP 20**

Ø d1/d2  
10/10

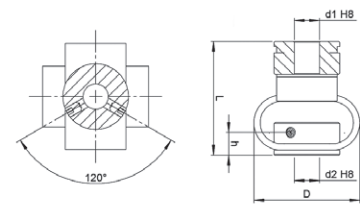


Ordering code example: GFP 20 10/10



**GFP 30**

Ø d1/d2  
12/12  
14/14



Ordering code example: GFP 30 12/12

|   | Symbol | 10       | 20     | 30     |
|---|--------|----------|--------|--------|
| Rotation diameter                                     | D      | 29 ± 1   | 48 ± 1 | 58 ± 1 |
| Length in the idle mode                               | L      | 29 ± 1,5 | 46 ± 2 | 56 ± 1 |
| Height of the thread screw                            | h      | 2,5      | 9      | 11     |
| Minimum diameter of the drill hole                    | d1/d2  | 4        | 8      | 10     |
| Maximum permitted diameter of the standard drill hole | d1/d2  | 10       | 14     | 19     |
| Hexagonal screw DIN 916                               |        | M3       | M4     | M5     |

Dimensions in mm

