



Operating instructions  
Sealing edge protection for grinding operations  
on Aseptoflex Vario standard welding adapters

**GB**

**E30160**



# Contents

- 1 Preliminary note ..... 3
  - 1.1 Symbols used ..... 3
  - 1.2 Warnings used ..... 3
- 2 Safety instructions ..... 3
- 3 Intended use ..... 3
- 4 Installation ..... 4
  - 4.1 Installation of E30160 on standard welding adapter ..... 4
  - 4.2 Processing of the weld seam for standard welding adapters ..... 4
- 5 Disposal ..... 5


# 1 Preliminary note

You will find instructions, technical data, approvals and further information using the QR code on the unit / packaging or at [www.ifm.com](http://www.ifm.com).

## 1.1 Symbols used

- ✓ Requirement
- ▶ Instructions
- ▷ Reaction, result
- [...] Designation of keys, buttons or indications
- Cross-reference
-  Important note  
Non-compliance may result in malfunction or interference.
-  Information  
Supplementary note

## 1.2 Warnings used


<b>ATTENTION</b>	Warning of damage to property
	<b>WARNING</b> Warning of serious personal injury ▷ Death or serious irreversible injuries may result.

# 2 Safety instructions

- Read this document before setting up the product and keep it during the entire service life.
- The product must be suitable for the corresponding applications and environmental conditions without any restrictions.
- Only use the product for its intended purpose (→ Intended use).
- If the operating instructions or the technical data are not adhered to, personal injury and/or damage to property may occur.
- The manufacturer assumes no liability or warranty for any consequences caused by tampering with the product or incorrect use by the operator.
- Installation, set-up, operation and maintenance of the product must be carried out by qualified personnel authorised by the machine operator.

# 3 Intended use

The sealing edge protection, in combination with a welding aid (E30452), provides protection of the metallic sealing edge on standard welding adapters when grinding operations are carried out on the weld seam.

-  One set of the E30160 is for one-time use.

## 4 Installation

### ATTENTION

Dangers for the plant and environment during rework.

- ▶ Consider possible dangers and adhere to applicable regulations and guidelines.



### WARNING

Dangers for persons during rework.

- ▶ Consider possible dangers and adhere to applicable regulations and guidelines.



The grinding protection must be centred on both sides before final tightening.

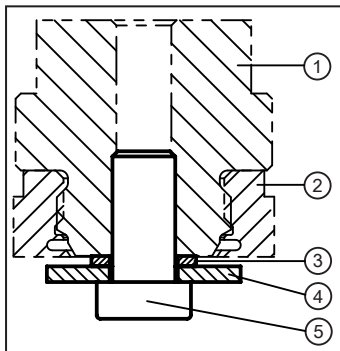
Do not scratch the surfaces with the grinding protection caps.



One grinding protection set is for one-time use.

### 4.1 Installation of E30160 on standard welding adapter

- ▶ Insert the components into the welded adapter (2).



- 1: Welding aid E30452
- 2: Welding adapter (depending on model)
- 3: E30160 spacer disk (small disk)
- 4: E30160 grinding protection (large protective disk)
- 5: E30160 (M12 screw)

### 4.2 Processing of the weld seam for standard welding adapters

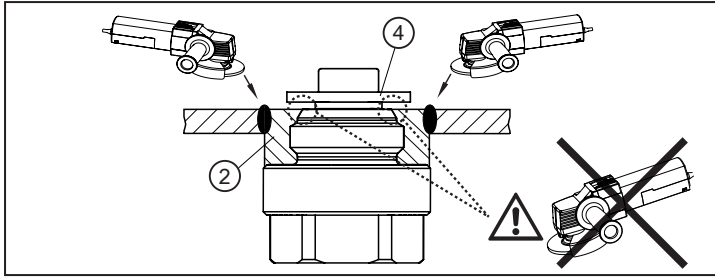


Observe and use protective devices and equipment according to the product specifications, installation conditions and ambient conditions.




Observe and use the operating instructions and safety instructions for the tools used.


- ▶ Guide the grinding tool parallel to the surface to be processed.
- ▶ Carry out the grinding process in such a way that the large protective disk (4) is only worn to the extent that the sealing edge of the adapter (2) remains undamaged.



2: Welding adapter (depending on model)

4: E30160 grinding protection (large protective disk)

 Do not damage the sealing edge of the sensor sealing.

 One set of the E30160 is for one-time use.

## 5 Disposal

- ▶ After use dispose of the product or components in an environmentally friendly way in accordance with the applicable national regulations.