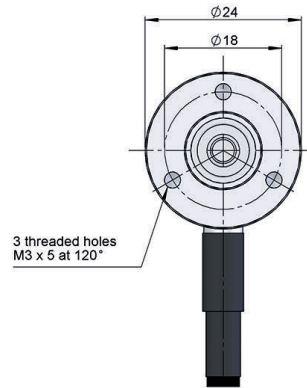
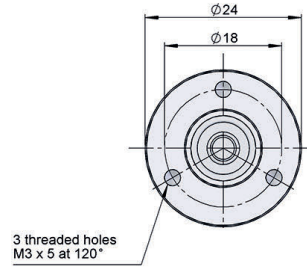
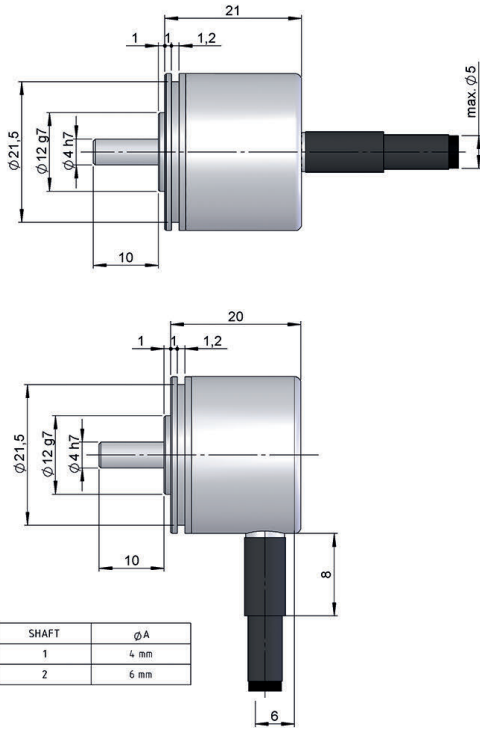




SERIE 26

MINIATURE SOLID SHAFT INCREMENTAL ENCODER FOR INDUSTRIAL APPLICATIONS

- Resolution up to 1024 pulses per turn
- External diameter 24 mm
- Shaft 4 or 6 mm
- Protection class IP64 according to DIN EN 60529
- Connection by cable (any cable length available)



Drawing shaft type 1, connection type 1/2

REFERENCE

Reference example : 26-1721-500

Serie	Shaft	Output signals	Connection	Power Supply / Electronic output	Pulses number	Special customer
26 -	<input type="checkbox"/>	<input type="checkbox"/>	<input type="checkbox"/>	<input type="checkbox"/> -	<input type="checkbox"/> <input type="checkbox"/> <input type="checkbox"/> <input type="checkbox"/>	<input type="checkbox"/> <input type="checkbox"/> <input type="checkbox"/> <input type="checkbox"/>
	1. Ø4 mm 2. Ø6 mm	2. A+B 3. A+B+0 7. A \bar{A} +B \bar{B} +0 \bar{O} 8. A \bar{A} +B \bar{B}	1. Axial cable 2. Radial cable	0. 11...30V / NPN Open collector 11...30V 1. 11...30V / Line driver differential Push-Pull 11...30V 2. 5V / RS422 5V (compatible TTL)		ZT00. -40°C

Order your reference
Step file 3D
info@encoderhohner.com
service available in 24 h



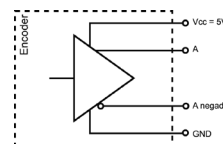
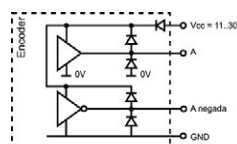
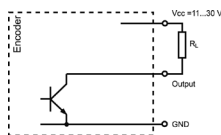
SERIE 26

MINIATURE SOLID SHAFT INCREMENTAL ENCODER FOR INDUSTRIAL APPLICATIONS

MECHANICAL SPECIFICATIONS

Materials	Cover: Aluminium Housing: Aluminium Shaft: Stainless Steel
Bearings	Ballraces
Bearings lifetime	1x10 ¹⁰ rev.
Maximum number of revolutions permitted mechanically	6000 rpm
Protection against dust and splashes according to DIN EN 60529	IP64
Rotor inertia moment	2 gcm ²
Starting torque at 20°C (68°F)	Max. 1 Ncm
Maximum load permitted on axial shaft	20 N
Maximum load permitted on radial shaft	10 N
Weight approx.	0,06 Kg
Operating temperature range	-20°C to +80°C - Standard -40°C to +80°C - Special Customer ZT00
Vibration	100 m/s ² (10Hz...2000Hz)
Shock	1000 m/s ² (6ms)
Maximum pulses per turn	1.024
Axial or radial connection	Cable 2 meters (other cable lengths or connector mounted at the end of the cable available on order)

OUTPUT SIGNALS



OUTPUT CIRCUIT	NPN Open Collector	Push-Pull Differential	RS422 (TTL compatible)
Reference code	0	1	2
Power supply	11...30 V	11...30 V	5 V ±5%
Output voltage	11...30 V	11...30 V	5 V
Consumption	40 mA	Typical: 45 mA Max: 150 mA	Typical: 70 mA Max: 150 mA
Max. load capability	40 mA	±30 mA	±20 mA
Lenght of cable allowed	50 m (a 24 V)	100 m	1200 m
"Low" signal level	VOL < 0,4 V (a 24 V)	VOL < 2.5 V	VOL < 0,5 V
"High" signal level	VOH > 22 V (a 24 V)	VOH > Vcc - 3 V	VOH > 2.5 V
Frequency	100 kHz	200 kHz	300 kHz
Short circuit protection	Not permanent	Yes	Yes
Protection against polarity inversion	Yes	Yes	No

Channel A leads (90° electric) channel B, view from the shaft, shaft rotating clockwise

SERIE 26

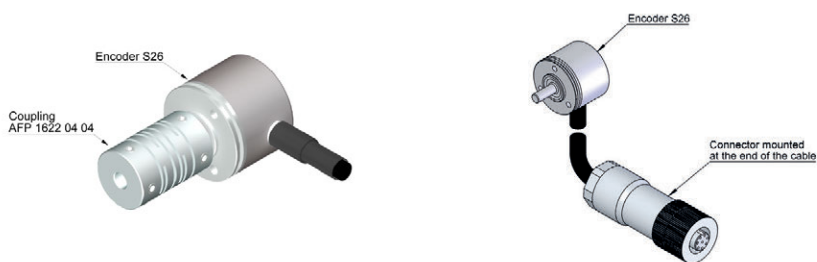
MINIATURE SOLID SHAFT INCREMENTAL ENCODER FOR INDUSTRIAL APPLICATIONS

CONNECTION

	95.0008051 (* Cable 5x0,14)	95.0008052 (* Cable 8x0,14)
GND	White	White
Vcc	Brown	Brown
A	Green	Green
B	Yellow	Grey
A inverted		Yellow
B inverted		Pink
0 (reference)	Grey	Blue
0 inverted	Grey	Red

(* For lengths over 2 meters standard cable, we recommend the use of twisted pair cable 2x2x0,14+1x0,14 (95.0008002) or 3x2x0,14+2x0,34 (95.0008003). Request the final cable length required to avoid junctions.

ACCESSORIES EXAMPLES



All the accessories available in the section "MOUNTING ACCESSORIES".