

MAIN FEATURES

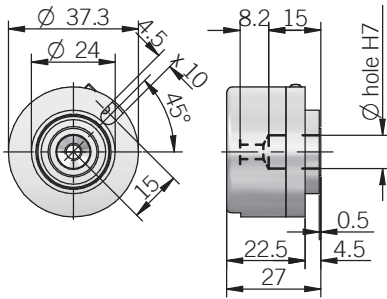
∅ 36 mm encoder series recommended in feedback control systems on AC servomotors, interchangeable with size 15 Resolver in the back of the motor.

- 6 channels encoder with optical generation of “Hall effect phases” (commutation signals)
- Signal transmission by bit parallel bus
- Easy mechanical mounting
- Small dimensions
- Wide range of resolutions available
- High temperature resistance



ORDERING CODE	EF	36K	4	L	512	S	5	L	8	X	6	PR	.XXX
SERIES incremental encoder with Hall phases	EF												
MODEL blind hollow shaft with rear fixing		36K											
MOTOR POLES 4 poles (2 poles pair) 6 poles (3 poles pair) 8 poles (4 poles pair)			4 6 8										
ELECTRICAL INTERFACE FOR COMMUTATION SIGNALS NPN open collector line driver RS-422				C L									
INCREMENTAL RESOLUTION ppr from see table for pulses availability					500 to 1024								
ZERO PULSE without zero pulse with zero pulse						S Z							
POWER SUPPLY 5 V DC							5						
ELECTRICAL INTERFACE FOR INCREMENTAL SIGNALS line driver RS-422								L					
BORE DIAMETER mm (3/8") mm mm									8 9,52 9 10				
ENCLOSURE RATING IP										40			
MAX ROTATION SPEED rpm											6		
OUTPUT TYPE radial cable (standard length 0,3 m) preferred cable lengths 2 / 3 / 5 / 10 m, to be added after OUTPUT TYPE (eg. PR5)												PR	
VARIANT custom version													XXX

36 K



for size 15 Resolver flange please refer to Accessories section
dimensions in mm

ELECTRICAL SPECIFICATIONS

Incremental resolution	from 500 to 1024 ppr
Power supply	4,5 ... 5,5 V DC
Current consumption without load	150 mA max
Max load current	20 mA / channel (line driver RS-422) 30 mA / channel (NPN open collector)
Output type for incremental signals	line driver RS-422 (AELT-5000 or equivalent)
Output type for Hall phases	NPN open collector (pull-up max +30V DC) line driver RS-422 (AELT-5000 or equivalent)
Max output frequency	150 kHz
Counting direction	A leads B clockwise (shaft view)
Electromagnetic compatibility	according to 2014/30/EU directive
RoHS	according to 2011/65/EU directive
UL / CSA	certificate n. E212495

* for further details please see OUTPUT LEVELS under TECHNICAL BASICS section

CONNECTIONS

Function	Cable
+V DC	red
0 V	black
Ch. A	green
Ch. B	yellow
Ch. Z	blue
Ch. A-	brown
Ch. B-	orange or pink
Ch. Z-	white
Ch. U	grey
Ch. V	violet
Ch. W	grey-pink
Ch. U-	red-blue
Ch. V-	white-green
Ch. W-	brown-green
⊕	shield

MECHANICAL SPECIFICATIONS

Bore diameter	ø 8 / 9,52 (3/8") / 10 mm
Enclosure rating	IP 40 (IEC 60529)
Max rotation speed	6000 rpm
Shock	50 G, 11 ms (IEC 60068-2-27)
Vibration	5 G, 10 ... 500 Hz (IEC 60068-2-6)
Moment of inertia	0,5 x 10 ⁻⁶ kgm ² (12 x 10 ⁻⁶ lbf ²)
Starting torque (at +20°C / +68°F)	< 0,01 Nm (1,42 Ozin)
Bearing stage material	EN-AW 2011 aluminum
Shaft material	1.4305 / AISI 303 stainless steel
Housing material	EN-AW 2011 aluminum
Bearings	2 ball bearings
Bearings life	10 ⁹ revolutions
Operating temperature	-10° ... +85°C (+14° ... +185°F)
Storage temperature	-25° ... +85°C (-13° ... +185°F)
Fixing torque for shaft fixing	1,5 Nm max
Weight	150 g (5,29 oz)

RESOLUTIONS

500 4 / 6 poles
512 4 / 6 poles
1000 6 / 8 poles
1024 4 / 6 / 8 poles

please directly contact our offices for other pulses