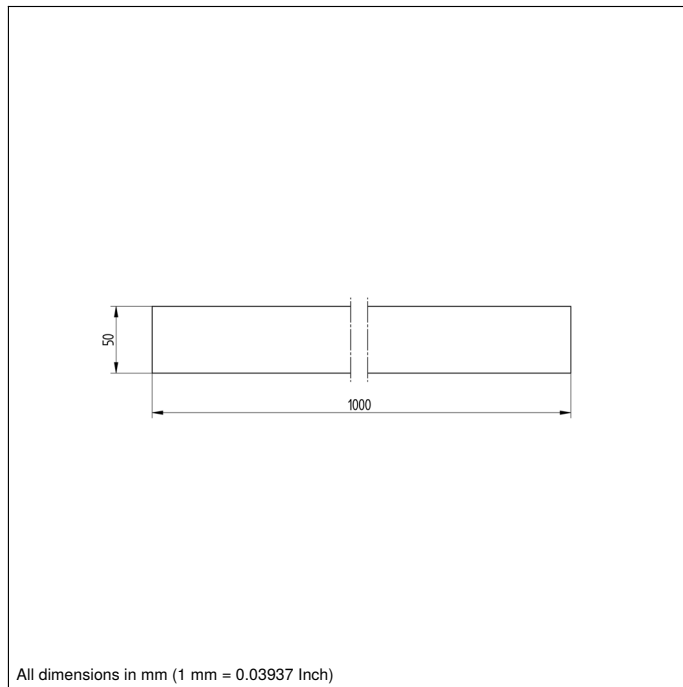
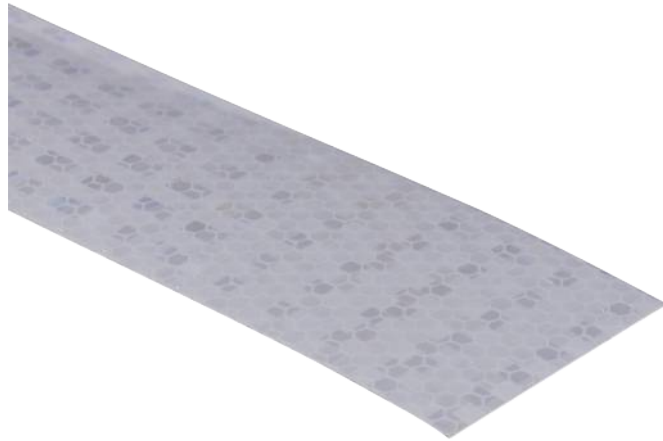


Reflector Foil

1000 × 50 mm

ZRAF08K01

Part Number



All dimensions in mm (1 mm = 0.03937 Inch)

Technical Data

| Mechanical Data | |
|-------------------|----------------|
| Structure | Comb Structure |
| Mounting Type | self-adhesive |
| Material | Plastic |
| Temperature Range | -20...60 °C |
| Packaging unit | 1 Piece |

- Self-adhesive