

# Reflector in Stainless Steel Protective Housing

## ZRDS01R01

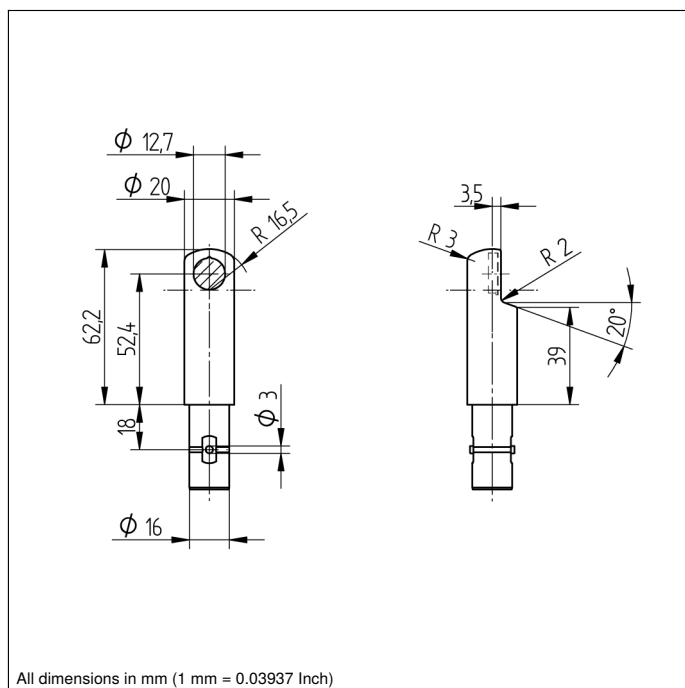
Part Number



### Technical Data

| Mechanical Data                  |                                     |
|----------------------------------|-------------------------------------|
| Structure                        | Continuous Structure                |
| Mounting Type                    | InoxLock                            |
| Material                         | Stainless Steel 316L                |
| Degree of Protection             | IP68/IP69K                          |
| Temperature Range                | -25...70 °C                         |
| Disc Material                    | PMMA (FDA)                          |
| Packaging unit                   | 1 Piece                             |
| Hygienic Design                  | <input checked="" type="checkbox"/> |
| Detergent resistant              | <input checked="" type="checkbox"/> |
| Suitable Mounting Technology No. | <b>140</b>   <b>490</b>             |

- **Cost-saving mounting**
- **Hygienic design makes it easy to clean**
- **Made with food safe materials that are FDA approved**
- **Resistant to cleaning agents**



InoxSens is the hygiene series from wenglor. Together with other components, wenglor's InoxSens reflectors in stainless steel protection housing are part of this complete system which is seamlessly integrated into the machine. The reflectors are furnished with IP68 and IP69K protection and are attached using either InoxLock or a mounting console for 20 mm.