



Model Number

CBN10-F46C-EI

Features

- Flat housing
- Insensitive to moisture condensation

Technical Data

General specifications

Output type		Digital current output
Rated operating distance	s_n	7 mm
Installation		non-flush
Output polarity		DC
Assured operating distance	s_a	0 ... 5 mm
Output type		3-wire

Nominal ratings

Installation conditions		
B		5 mm
C		20 mm
F		40 mm / 60 mm
Operating voltage	U_B	9 ... 30 V
Switching frequency	f	0 ... 5 Hz
Hysteresis	H	1 ... 10 typ. 5 %
Reverse polarity protection		reverse polarity protected
Short-circuit protection		yes
Design data		
No-load supply current	I_0	≤ 20 mA
Load resistor		0 ... 250 Ohm

Functional safety related parameters

MTTF _d	660 a
Mission Time (T _M)	20 a
Diagnostic Coverage (DC)	0 %

Digital output

Output type	object detected: 10 mA ± 1 mA object not detected: 5 mA ± 1 mA
-------------	---

Ambient conditions

Ambient temperature	-40 ... 85 °C (-40 ... 185 °F)
Storage temperature	-40 ... 85 °C (-40 ... 185 °F)

Mechanical specifications

Connection type	cable , PUR 2 m
Core cross-section	3 x 0.34 mm ²
Housing material	PVDF
Sensing face	PVDF
Degree of protection	IP67
Mass	75 g

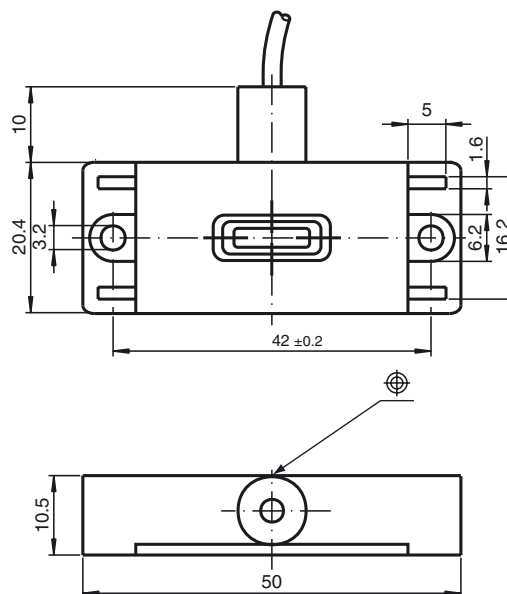
Compliance with standards and directives

Standard conformity	
Standards	EN 60947-5-2:2007 IEC 60947-5-2:2007

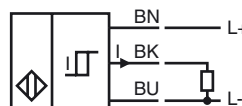
Approvals and certificates

UL approval	UL 60947-5-2: 2014 Class 2 power source type rating 1
CCC approval	CCC approval / marking not required for products rated ≤36 V

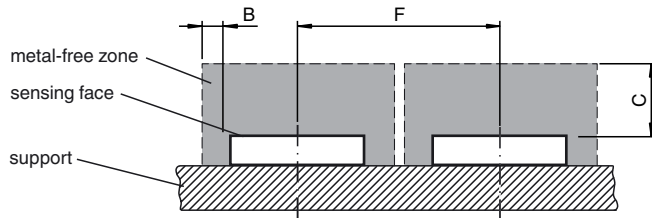
Dimensions



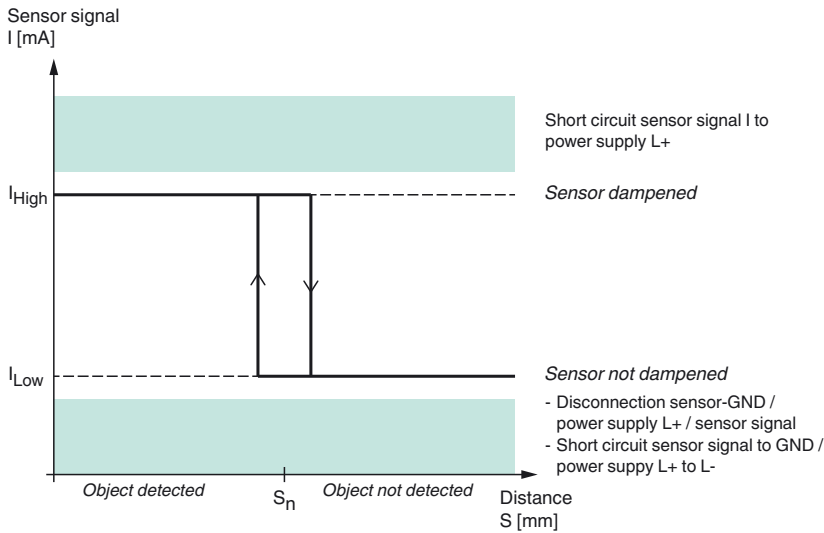
Electrical Connection



Installation Conditions



Characteristic Curves



Release date: 2017-04-11 11:53 Date of issue: 2017-04-11 279217_eng.xml