



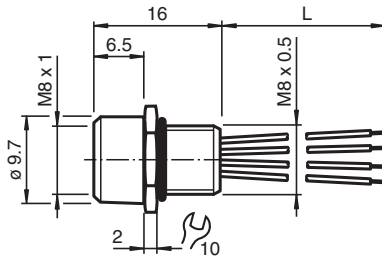
Receptacles V31-M8-500

- Front/screw mounting
- Halogen-free stranded wires
- Degree of protection IP67

Receptacles, M8, 4-pin



Dimensions



Technical Data

General specifications

Connector 1		
Connection		socket
Construction type		M8
Style		straight
Locking		screw connection
Number of pins		4
Coding		A-coded
UL File Number		E191152

Electrical specifications

Operating voltage	U_B	max. 48 V AC / 60 V DC
Operating current	I_B	max. 4 A
Volume resistance		< 3 mΩ

Conformity

Degree of protection		EN 60529
Plug connection		connector M8 x 1 : IEC 61076-2-104
Flammability		IEC 60332-1-2

Release date: 2021-04-27 Date of issue: 2021-04-27 Filename: 456942_eng.pdf

Refer to "General Notes Relating to Pepperl+Fuchs Product Information".

Pepperl+Fuchs Group
www.pepperl-fuchs.com

USA: +1 330 486 0001
fa-info@us.pepperl-fuchs.com

Germany: +49 621 776 1111
fa-info@de.pepperl-fuchs.com

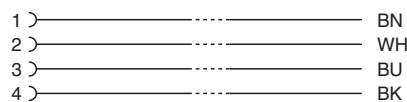
Singapore: +65 6779 9091
fa-info@sg.pepperl-fuchs.com

PEPPERL+FUCHS

Technical Data

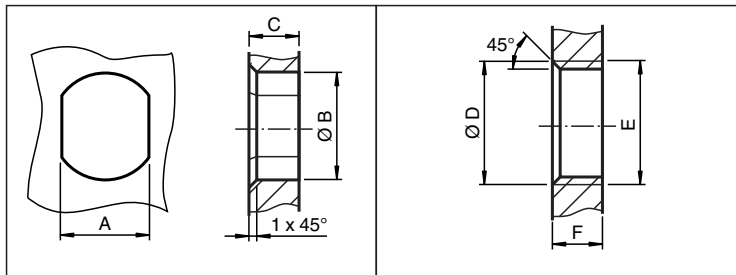
Halogen-free	IEC 60754-1	
Ambient conditions		
Ambient temperature		
Plug connector		-25 ... 85 °C (-13 ... 185 °F)
Cable, fixed		-40 ... 105 °C (-40 ... 221 °F)
Cable, flexing		-10 ... 105 °C (14 ... 221 °F)
Pollution degree		3
Mechanical specifications		
Plug connector		
Tightening torque		0.4 Nm
Mating cycles		min. 100
Degree of protection		IP67
Material		
Contacts		CuSn
Contact surface		Au
Connector		brass, nickel-plated
Seal		FKM
Core insulation		PVC
Cable		
Number of cores		4
Core cross-section		0.25 mm ²
Cores color		Core 1: brown Core 2: white Core 3: blue Core 4: black
Core construction		7 x 0.2 mm Ø
Length	L	500 mm
Installation		Front mounting M8
Material		
Halogen-free		yes
Plug connector		
Screw connection		brass, nickel-plated
Seal		FKM
Contact surface		Au
Flammability		HB
Cable		
Core insulation		PVC

Connection Assignment



Release date: 2021-04-27 Date of issue: 2021-04-27 Filename: 456942_eng.pdf

Mounting



	A	B	C	D	E	F
M8	7.1 ^{+0.1}	Ø 8.2 ^{+0.1}	2 - 4 mm	-	M8x0.5	2 - 4 mm
M12	11 ^{+0.1}	Ø 12.2 ^{+0.1}	< 4 mm	-	M12x1	< 4.5 mm
M16	13.5 ^{+0.1}	Ø 16.1	< 4.5 mm	Ø 17 ^{+0.2}	M16x1.5	> 2.5 mm
M20	13.5 ^{+0.1}	Ø 20.1	-	Ø 20 ^{+0.2}	M20x1.5	< 6 mm
PG9	13.5 ^{+0.1}	Ø 15.3 ^{+0.1}	< 4.5 mm	Ø 16	PG9	> 2.5 mm
PG13.5	18.8 ^{+0.1}	Ø 20.5 ^{+0.1}	-	Ø 22 ^{±0.1}	PG13.5	-

Accessories

	<p>LOCKNUT M8 NICKEL BRASS</p>	<p>Nut, nickel-plated brass</p>
--	---------------------------------------	---------------------------------

Release date: 2021-04-27 Date of issue: 2021-04-27 Filename: 456942_eng.pdf