

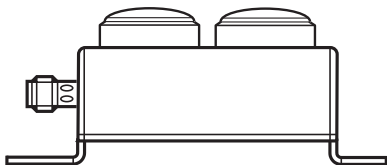


Operating instructions
AS-i illuminated pushbutton module
Stainless steel

UK

AC2380
AC2381

80291715/00 02/2020



Contents

1 Preliminary note.....	3
1.1 Key to the symbols	3
2 Safety instructions	3
3 Functions and features	3
4 Installation.....	4
5 Electrical connection.....	4
5.1 Pin connection/data bits	4
5.2 Data bits:.....	4
6 Addressing.....	5
7 Operation.....	5
8 Scale drawing	5
9 Maintenance, repair and disposal.....	5

1 Preliminary note

Technical data, approvals, accessories and further information at www.ifm.com.

1.1 Key to the symbols

▶ Instruction

→ Cross-reference



Important note

Non-compliance may result in malfunction or interference.



Information

Supplementary note.

UK

2 Safety instructions

- Read this document before setting up the product and keep it during the entire service life.
- The product must be suitable for the corresponding applications and environmental conditions without any restrictions.
- Only use the product for its intended purpose (→ Functions and features).
- If the operating instructions or the technical data are not adhered to, personal injury and/or damage to property may occur.
- The manufacturer assumes no liability or warranty for any consequences caused by tampering with the product or incorrect use by the operator.
- Installation, electrical connection, set-up, operation and maintenance of the product must be carried out by qualified personnel authorised by the machine operator.
- Protect units and cables against damage.

3 Functions and features

- Maximum number of modules per master: 62
- AS-interface version 3.0, backwards compatible

4 Installation



▶ Disconnect power before installation.

▶ Installation via existing bore holes.

The mounting orientation has no adverse effect on the function.

5 Electrical connection



The unit must be connected by a qualified electrician.

The national and international regulations for the installation of electrical equipment must be adhered to.

▶ Disconnect the installation from power and connect the unit.

To ensure the protection rating:

▶ Connect the AS-i connector to the M12 socket.

▶ Tighten firmly, recommended tightening torque 0.3...0.5 Nm.

5.1 Pin connection/data bits

M12 connector

1: AS-i +

3: AS-i -



AC2380

2 inputs / 2 outputs / 1 NO - LED blue / 1 NO - LED white

AS-i profile S-B.A.E / extended addressing mode: yes

AC2381

2 inputs / 2 outputs / 1 NC - LED red / 1 NO - LED green

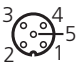
AS-i profile S-B.A.E / extended addressing mode: yes

5.2 Data bits:

D0	D1	D2	D3
-	-	DI-2: pushbutton 1	DI-3: pushbutton 2
DO-0: LED 1	DO-1: LED 2	-	-

6 Addressing

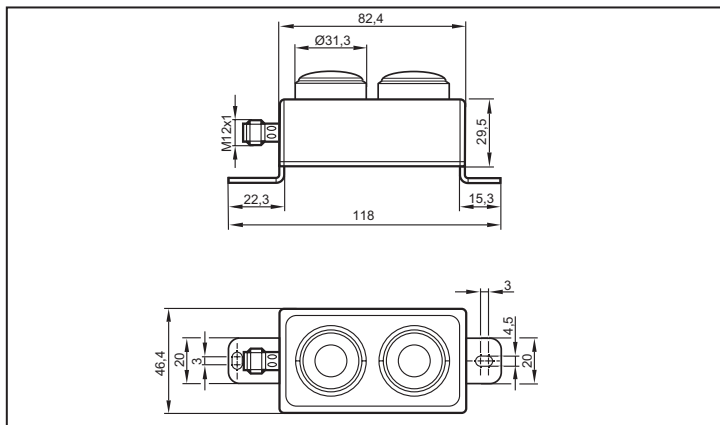
- ▶ Address the unit via the M12 connector; the address is set to 0 at the factory.
- ▶ Assign a free address between 1A and 31B.

Addressing unit AC1154 Wiring of the addressing socket		1: AS-i + 2: TTL → 3: AS-i - 4: TTL ← 5: + 5 V
--	---	--

7 Operation

- LED PWR green on: AS-i voltage supply ok
- LED FAULT red on: AS-i communication error, slave does not participate in the "normal" exchange of data, e.g. slave address 0

8 Scale drawing



9 Maintenance, repair and disposal

The operation of the unit is maintenance-free. Dispose of the unit in an environmentally friendly way in accordance with the applicable national regulations when it is no longer used.